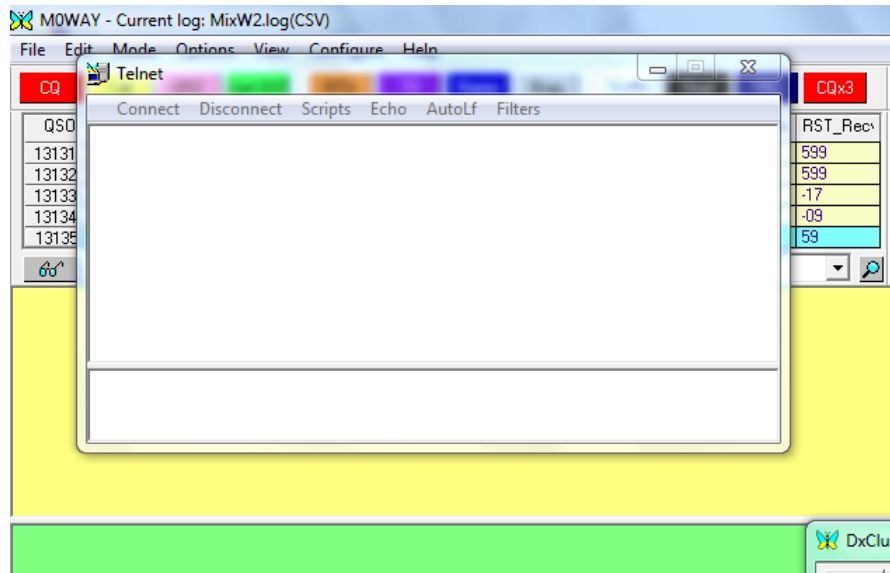


# Mixw dxcluster Temporary Fix

Open Mixw and click on "View" then at the bottom click "Telnet Window"

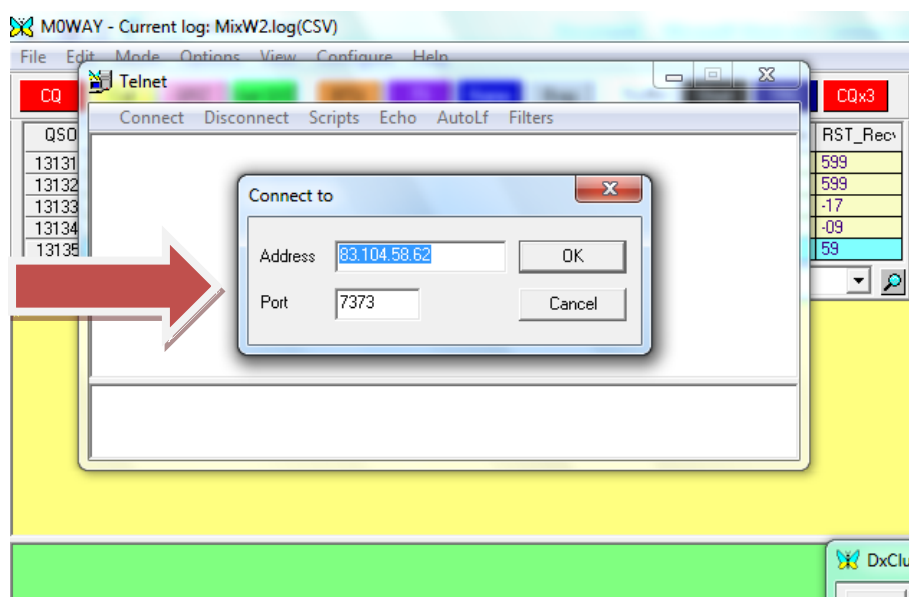


Click on "Connect" and then use any of these numbers below:-

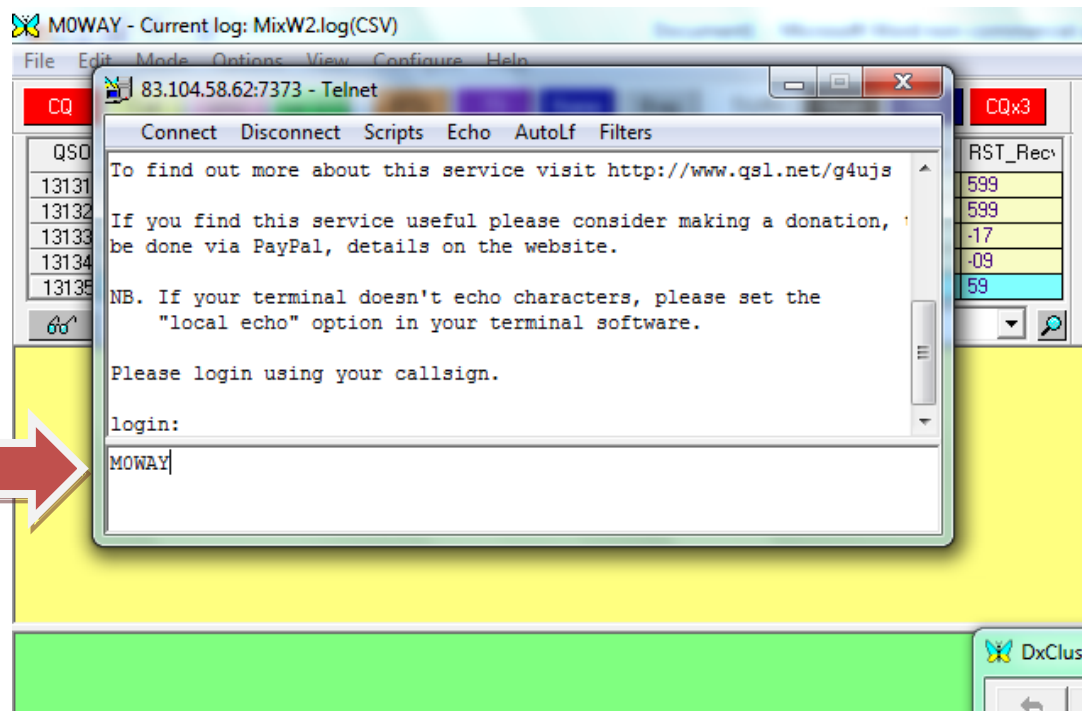
65.172.152.29 port 7300	208.111.3.150 port 7300	128.111.3.150 port 7300
195.43.189.178 port 8000	213.186.225.90 port 8000	83.104.58.62 port 7373

I used 83.104.58.62 port 7373

Then click OK



Then login with your own callsign as below and press the ENTER key.



Within a few moments you will notice the dxcluster starting to work again, you can then minimize the telnet window.

If you get a disconnected message this is probably because too many people are connected to the same Telnet, so try a different ones.

The only problem is you have to login each time you open Mixw.

Hope that help's.

Wayne MOWAY