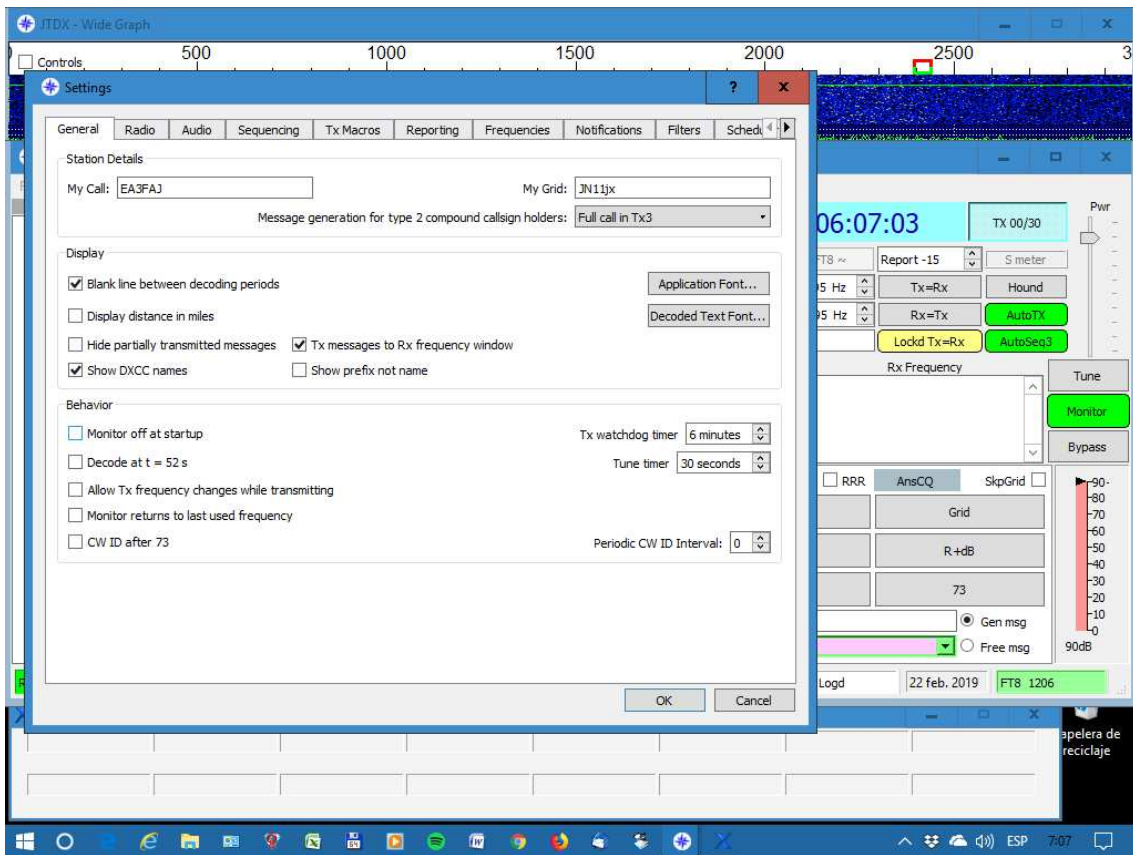
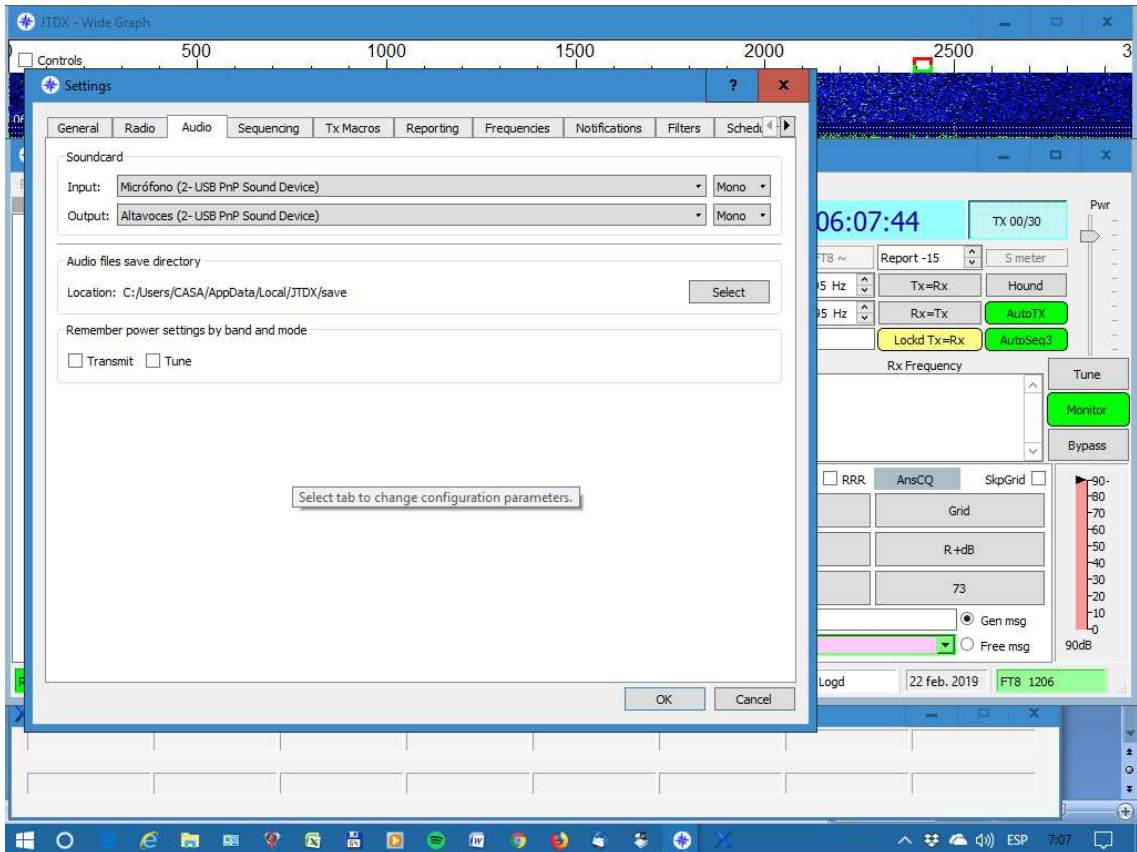
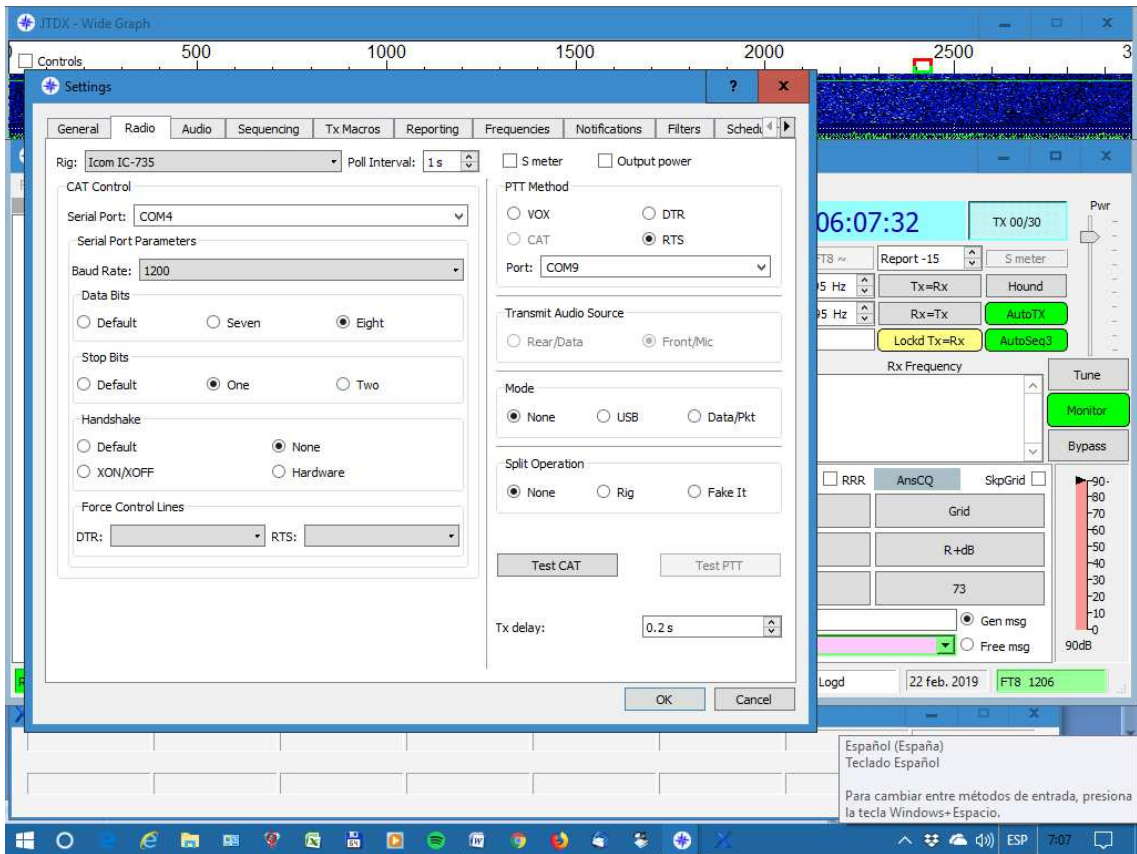
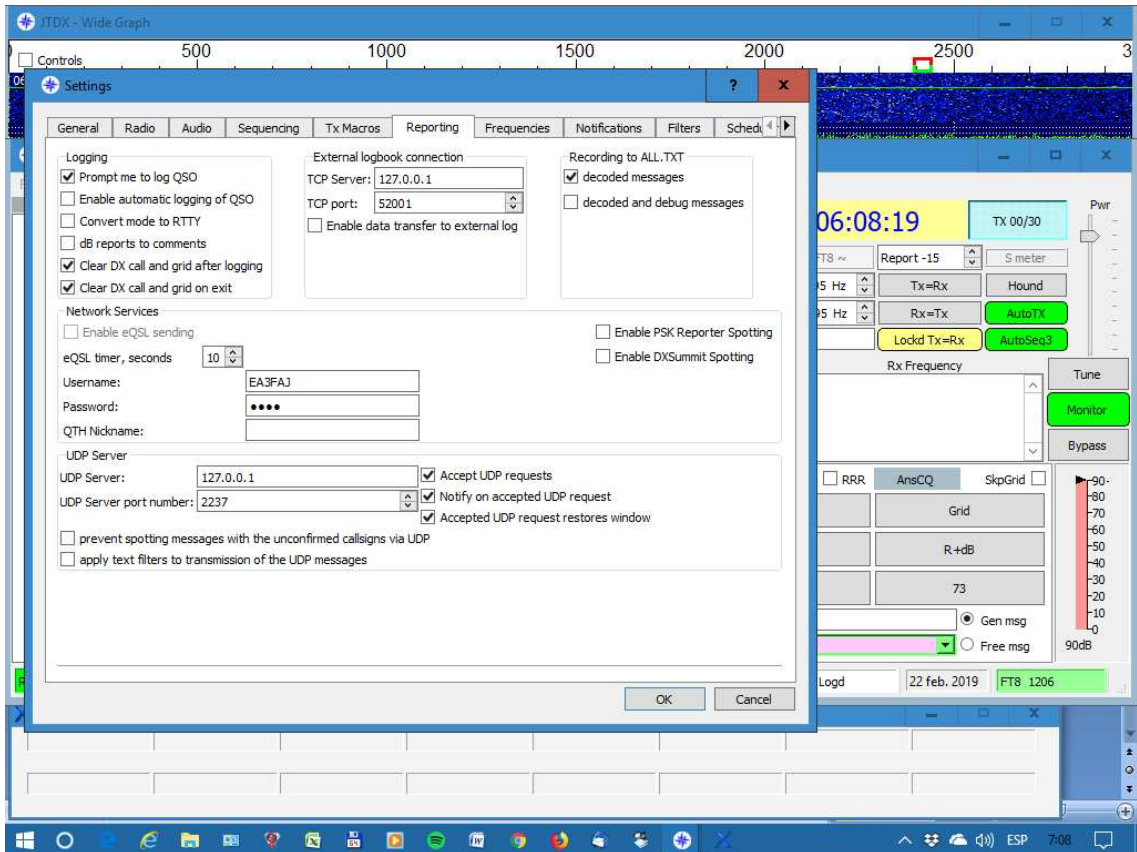
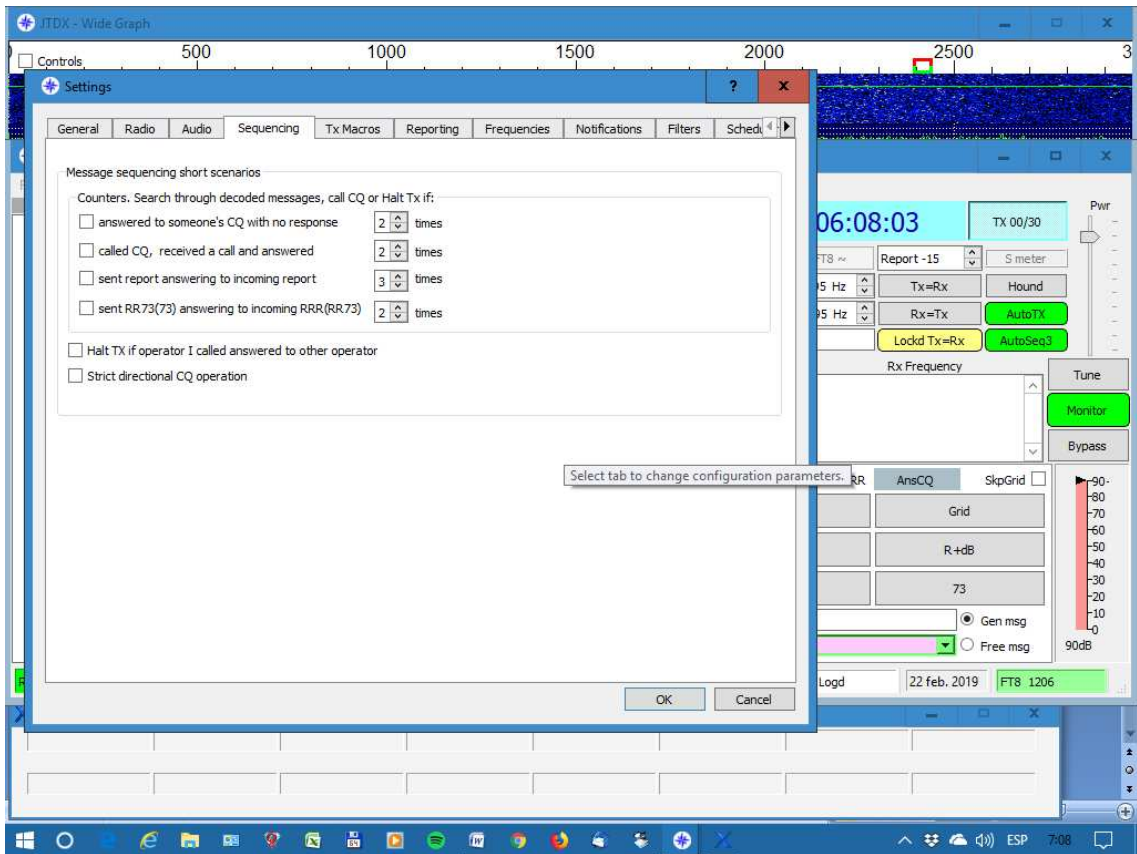


JTDX







ITDX - Wide Graph

500 1000 1500 2000 2500

Settings

General Radio Audio Sequencing Tx Macros Reporting Frequencies Notifications Filters Sched

'New one' and 'worked one' B4 status notifications

Check and highlight new DXCC per band per mode Beep as well
 Check and highlight new grids per band per mode Beep as well
 Check and highlight new calls per band per mode Beep as well
 Highlight worked ones strike it underline it don't show it
 Inverse text/background color
 Highlight other standard messages

Beep on my call Beep on 1st decoded message

Markers Other standard messages red / my call in message blue / my call at QSO

Configuration tips

Transmitted message: K1ABC

CQ/73 in message: K1ABC

My Call in message: K1ABC

Other standard message: K1ABC

New DXCC: K1ABC

New DXCC on Band/Mode: K1ABC

New Grid: K1ABC

New Grid on Band/Mode: K1ABC

New Call: K1ABC

New Call on Band/Mode: K1ABC

Worked one: K1ABC

OK Cancel

06:08:40 TX 00/30 Pwr

FT8 ~ Report -15 S meter

5 Hz Tx=Rx Hound

5 Hz Rx=Tx AutoTX

Lockd Tx=Rx AutoSeq3

Rx Frequency Tune Monitor Bypass

RRR AnsCQ SkpGrid Grid R+dB 73 Gen msg Free msg

Logd 22 feb, 2019 FT8 1206

ITDX - Wide Graph

500 1000 1500 2000 2500

Settings

Audio Sequencing Tx Macros Reporting Frequencies Notifications Filters Scheduler Advanced

JT65 decoding parameters

Number of decoding attempts: 3
 Number of decoding passes: 4
 RX frequency decoding attempts: 1
 Hinted decoding DT range: 1
 Use frequency mask decoding
 Top decoding frequency: 2700 Hz
 Harmonics decoding depth: 0

Configuration tips

DT range	DT low threshold, sec	DT high threshold, sec
1	-0.5	1
2	-1	2
3	-1.5	3
4	-2.5	4
5	-3.5	5

T10 decoding parameters

Number of decoding attempts: 1
 RX frequency decoding attempts: 1

Pass 1 wideband decoding. Same candidate list being used for subpasses. subpass 1 subtraction of the decoded signal
 subpass 2, getting frequency mask for non decoded signals
 subpass 2 subtraction of the decoded signal

Frequency mask decoding passes. Candidate list being recalculated for every subpass. subpass 1 subtraction of the decoded signal
 subpass 2 subtraction of the decoded signal

RX frequency decoding (like single decode). Three passes being used, the candidate list being recalculated for each pass. Up to two candidates in the list. subtraction of the decoded signal

Pass 2 wideband decoding subtraction of the decoded signal

Pass 3 wideband decoding subtraction of the decoded signal

Pass 4 wideband decoding subtraction of the decoded signal

OK Cancel

06:08:59 TX 00/30 Pwr

FT8 ~ Report -15 S meter

5 Hz Rx=Tx AutoTX

5 Hz Lockd Tx=Rx AutoSeq3

Rx Frequency Tune Monitor Bypass

RRR AnsCQ SkpGrid Grid R+dB 73 Gen msg Free msg

Logd 22 feb, 2019 FT8 1206

Select tab to change configuration parameters.